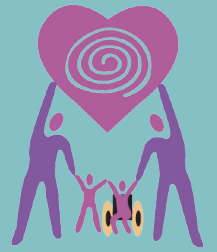




EARLY START SUPPORT GROUP



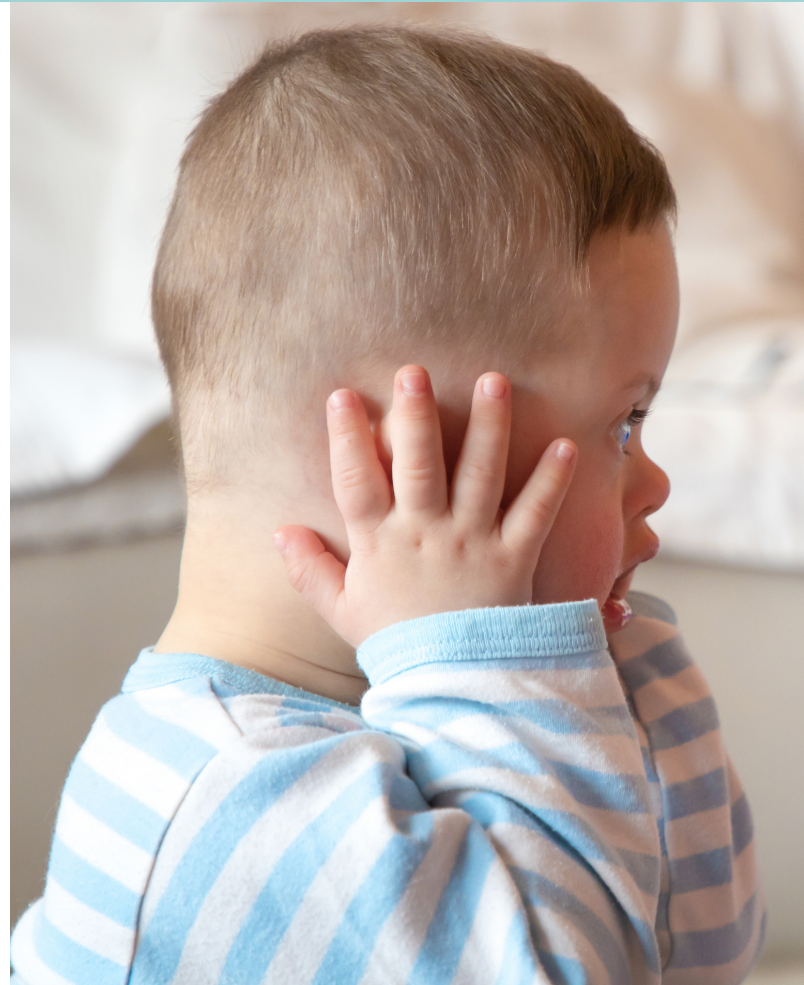
OUR SUPPORT GROUP IS MEETING ONLINE USING ZOOM UNTIL FURTHER NOTICE.

A SPECIAL CONNECTIONS SUPPORT GROUP

Special Connections Family Resource Center serves families of infants and toddlers (birth to three years of age) with disabilities in Santa Cruz and San Benito Counties

Are you a parent of an infant or toddler with delays or disabilities?

Join our group and meet other families who are going through a similar experience. Often new parents feel overwhelmed, and we hope this group can help you build a community of support. Come share what is going through your mind and learn about resources and special needs related topics



MEETINGS TAKE PLACE THE
3RD WEDNESDAY OF THE MONTH VIA ZOOM
TIME: 4PM-5PM



To receive ZOOM meeting info contact Heidi Lister by email at special.connections.sc@gmail.com or by phone at (831) 234-0990 and leave a message or sent a text.