



Welcome/Bienvenidos

Letter from the Director/Carta Enviada por el Director



Dear SPIN supporters:

QUIZ NITE 2010: Wow! SPIN celebrated turning ten with a huge Quiz Nite event at a new venue, Holy Cross Parish Hall in Santa Cruz, held on March 13, 2010. We have really “stepped up our game,” as they say. We were honored to have SPIN founding board members Jim Baker, Mary Balzer, Pat Golditch, Amanda Owens, and Debbie Wechsler all in attendance and they were really surprised when they received Assembly and Senate certificates, recognizing their work in creating SPIN. Mary Balzer came all the way from Colorado. A big thanks to Mary for her commitment to SPIN. I have to thank everyone who made our “Quiz Nite” fundraiser such a huge success; we raised \$22,000 the most money to date for this event. The food, catered by Barbara & Company, was better than ever and we had a professional photographer, Brain Frus of Given Light Photography (www.givenlight.com).

For the first time, Quiz Nite was covered by Community TV of Santa Cruz County, and along with videographer Peter McGettigan, CTSCC Executive Director Mary Ann Thyken and CTSCC board member Joyce Anderson were in attendance at SPIN Advisory Board member Emily Reilly’s table.

In honor of our ten years as a nonprofit, SPIN received proclamations from the City of Santa Cruz, presented by Mayor Mike Rotkin, and County of Santa Cruz, presented by our wonderful keynote speaker, County Supervisor Mark Stone, who gave an empowering speech about SPIN. The proclamations proclaimed March 13, 2010, as SPIN Day and March 13-20, 2010, as SPIN week in the City and County of Santa Cruz.

Our Quiz Nite committee worked tirelessly for six months before the event, getting prize donations, soliciting sponsors, creating the program, making invitations, finding the caterer, the DJ, the photographer, the venue, contacting the local TV, newspapers, radio,

Dear SPIN supporters:

QUIZ NITE 2010: Wow! SPIN celebró diez años de existencia como una organización no lucrativa con un acontecimiento inmenso de Quiz Nite, en una nueva localidad, el salón de fiestas de la iglesia Holy Cross en Santa Cruz, que se llevo acabo el 13 de marzo de 2010. Nosotros realmente “ascendimos nuestro juego” como dicen. Fuimos honorados con la presencia de los miembros fundadores de la mesa directiva de SPIN Jim Baker, Mary Balzer, Pat Golditch, Amanda Owens y Debbie Wechsler todos fueron sorprendidos realmente cuando recibieron certificados de la Asamblea y el Senado, reconociendo su trabajo por crear a SPIN. Mary Balzer vino desde Colorado. Un agradecimiento inmenso a Mary por su compromiso a SPIN. Tengo que darle las gracias a todos los que hicieron nuestro evento de recaudar fondos “Quiz Nite” un inmenso éxito; recaudamos \$22,000 la cantidad más grande hasta la fecha para este evento. La comida proveída por Barbara & Company, fue mejor que nunca y tuvimos un fotógrafo profesional, Brain Frus de Given Light Photography (www.givenlight.com).

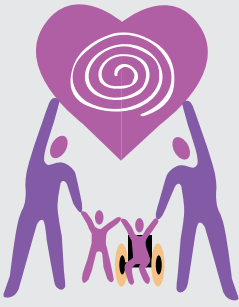
Por primera vez Quiz Nite fue cubierto por la televisión de la Comunidad del Condado de Santa Cruz y junto con el camarógrafo Peter McGettigan, Directora ejecutiva de CTSCC Mary Ann Thyken y miembro de la mesa directiva de CTSCC Joyce Anderson estuvieron en asistencia en la mesa del miembro de la mesa consultiva de SPIN, Emily Reilly.

En honor a nuestros 10 años como una organización no lucrativa, SPIN recibió proclamaciones de la Ciudad de Santa Cruz, presentado por el Alcalde Mike Rotkin y el Condado de Santa Cruz presentado por nuestro maravilloso orador del día Supervisor del Condado Mark Stone, que dio un discurso fuerte acerca de SPIN. Las proclamaciones proclamaron el 13 de marzo de

...Nurturing
Special Kids'
Potential



...Nutriendo
el Potencial de
Niños Especiales



Special Parents Information Network

SPIN is a nonprofit organization dedicated to providing support, information and training to the families and guardians of children with special needs.

Red de Información para Padres Especiales SPIN es una organización sin fin de lucro dedicada a proveer apoyo, información y entrenamiento para las familias y tutores de niños con necesidades especiales.

BOARD OF DIRECTORS/ MESA DIRECTIVA

- Eileen Fuller, *Chair*
- Lisa French, *Secretary*
- Cheri Bell
- Margaret (Peg) Gallagher
- Ed Golditch
- Courtney Leibrock
- Melissa Scarpace

STAFF/PERSONAL

- So. Santa Cruz County:**
 Cece Pinheiro, *Executive Director*
 Elizabeth Chavez, *Parent Support & Training Coordinator*
 Sonia Cervantes, *Bilingual Mentor Parent Coordinator*

- No. Santa Cruz County:**
 Sonia Plageman, *Parent support & Training Coordinator*
 Nancy Winans, *Mentor Parent Coordinator*

- San Benito County:**
 Monica Sandoval, *Parent Support & Training Coordinator*

Letter from the Director/Carta Enviada por el Director

CONTINUED—

and much more. This year's committee deserves a big thank you for creating the best Quiz Nite ever. Thanks to Amanda Owens, Cheri Bell, Eileen Fuller, Peg Gallagher, Pat Golditch, Melissa Scarpace, and Lisa French. If you haven't been to this amazing yearly event, you are really missing something. If you would like to help next year, contact Amanda at (831) 234-4778 and help make next year's Quiz Nite event brighter. SPIN's board of directors is one of the hardest working nonprofit board in the county, I was remiss by not letting each and every one of our board members know at the last board meeting what a great job you all did at Quiz Nite and how proud I am of each of you for all you do. You make this organization what it is. You should be proud and happy about the success of this year's Quiz Nite. Thanks to our dedicated board chair Eileen Fuller, members Cheri Bell, Lisa French, Peg Gallagher, Ed Golditch, and Melissa Scarpace.

The Haifley Family generously shared with us their story, along with a slide show presentation that shared experience, strength, and hope with the audience. It was truly the "real deal" of what it is like to have a child with a disability, and it was truly moving. Thanks again to the Haifleys, to Blue Screen Computers for the PowerPoint presentation, and to Lex vandenBerghe for reading the Haifley's testimonial.

2010 como Día de SPIN y el 13-20 de marzo de 2010, como la semana de SPIN en la Ciudad y el Condado de Santa Cruz.

Nuestro comité de Quiz Nite trabajo incansablemente por seis meses antes del acontecimiento, consiguiendo donativos premiados, solicitando patrocinadores, creando el programa, haciendo invitaciones, contratando a alguien que haga la comida, el DJ, el fotógrafo, el lugar de actuación, contactando la televisión local, los periódicos, la radio, y mucho más. El comité de este año merece un agradecimiento inmenso por crear el mejor Quiz Nite jamás. Gracias a Amanda Owens, Cheri Bell, Eileen Fuller, Peg Gallagher, Pat Golditch, Melissa Scarpace y Lisa French. Si usted no ha asistido a este asombroso acontecimiento anual usted realmente se esta perdiendo de algo. Si usted quiere ayudar el próximo año contacte a Amanda al (831) 234-4778 y ayude a que el próximo Quiz Nite sea aun más brillante. La mesa directiva de SPIN es una de las mesas directivas no lucrativas en el condado que trabaja más duro, yo fui negligente en no dejarles saber a cada uno de los miembros de la mesa directiva en la ultima junta de la mesa directiva el gran trabajo que hicieron en Quiz Nite y cuán orgullosa yo estoy de cada uno de ustedes por todo lo que hacen. Ustedes hacen esta organización lo que es. Deben estar orgullosos y felices acerca del éxito del Quiz Nite de este año. Gracias a nuestra dedicada presidenta de la mesa directiva Eileen Fuller, los miembros Cheri Bell, Lisa French, Peg Gallagher, Ed Golditch & Melissa Scarpace.

La Familia Haifley compartió generosamente con nosotros su historia junto con una presentación de exposición que compartía su experiencia, su fuerza y esperanza con la audiencia. Contaba la realidad de lo que es tener un niño/a con una incapacidad, fue realmente conmovedora. Gracias otra vez a los Haifleys, a Computadoras Blue Screen por la presentación de exposición y a Lex vandenBerghe por leer el testimonio de los Haifleys.



News from our Spanish Speaking Down Syndrome Support Group

BY ELIZABETH CHAVEZ

We are happy to share with all of you that the SP Down Syndrome Support Group has been a SPIN support group for two years. We are proud of the great success it has had. It's been a journey getting parents to show up for meetings but it looks like we finally have a committed group of parents. In the last year and part of this year we've had several events for the group. In December 2009 we had a winter gathering where all the children received gifts and participated in many crafts. In February 2010 we had a speaker come and talk to the group about the emotional aspects of raising a child with special needs. Recently in April 2010 we had an Easter gathering where all the kids decorated baskets and got gifts bags. We also completed a survey for the California Association of Family Empowerment Centers and parents received SPIN tote bags as a token of our appreciation. I want to thank all our parents for their willingness and commitment to supporting each other. In particular I want to thank Wendy our parent leader for her commitment and dedication to the group.



Noticias del Grupo de Apoyo Síndrome Down

POR ELIZABETH CHAVEZ

Estamos felices de compartir con ustedes que el grupo Síndrome Down ya lleva dos años siendo parte de SPIN y estamos orgullosos del éxito que ha tenido. Ah sido una gran batalla conseguir que todos los padres asistan a las juntas pero parece que ya tenemos un grupo de padres comprometidos. En el último año y parte de este año el grupo ha tenido varios eventos. En diciembre del 2009 tuvimos una fiesta navideña y todos los niños recibieron un regalo y participaron en varias actividades. En febrero de este año tuvimos un presentador que hablo sobre los desafios emocionales de criar un hijo/a con necesidades especiales. Recientemente en Abril del 2010 tuvimos una celebración de pascua. Todos los niños decoraron una canasta y recibieron una bolsa de regalo llena de actividades. Los padres también completaron una encuesta para el California Association of Family Empowerment Centers y recibieron una bolsa de SPIN de agradecimiento. Quiero dar las gracias a todos los padres del grupo por su compromiso y voluntad para ayudarse uno al otro. En especial quiero dar las gracias a Wendy nuestro padre líder por su compromiso y dedicación al grupo.



announcements/ anuncios

*Alone we can
do so little.*

*Together we can
do so much.*

HELEN KELLER



*Solos podemos
hacer poco.*

*Juntos podemos
hacer mucho.*

HELEN KELLER

Lindamood-Bell

March 2010

Many individuals struggle with problems related to reading and language comprehension. Factor in diagnoses like dyslexia, ADD, and autism and it can be difficult to know where to turn for the right educational assistance.

Lindamood-Bell Learning Processes was founded in 1986 by Nanci Bell and Patricia Lindamood, the authors of critically acclaimed language and literacy programs. These passionate and dedicated women have made it their mission to provide instruction that helps people of all ages.

Lindamood-Bell's paradigm is based on the knowledge that language and literacy skills are cognitive acts. To that end, Lindamood-Bell® instruction is based on a theory of cognition rather than reading methods or strategies that do not address the global needs of all individuals.

Common symptoms of weak reading skills can include slow or inaccurate reading, difficulty in acquiring sight words, and poor spelling. Symptoms of weak language processing can include weak written or oral comprehension, an inability to express oneself clearly and succinctly, difficulty in remembering information, poor critical thinking, and possibly a history of being labeled "inattentive" or "unmotivated."

Lindamood-Bell® instruction develops and strengthens the sensory-cognitive functions of phonemic awareness, symbol imagery, and concept imagery. A weakness in any one of these functions will interfere with a student's ability to learn. With appropriate instruction, an individual can develop these functions and become a successful learner.

The Lindamood-Bell Monterey center is possibly opening a summer clinic in Santa Cruz to help students of all ages. For more information, please call (831) 372-5753 or visit www.LindamoodBell.com.

Thank You Thursdays!

Thursday, May 13, 2010
12 NOON - 7PM

\$1 from every beer

Santa Cruz Mountain Brewery will go to SPIN!

Please come to

Santa Cruz Mountain Brewery on
402 Ingalls St., Santa Cruz, CA 95060
In the Swift St. Courtyard.

Dogs and kids welcome.

All other food and beverages **not** included.



Easter Seals Camp Harmon

Camp Harmon is a residential camp for children and adults with disabilities. It is located in Boulder Creek, CA. Ranging in age from 8 to 62; campers have choice of 10 sessions throughout summer that include horseback riding, swimming, arts and crafts, and many games. Contact Janet Crosse at (831) 684-2166 Ext.115 for more info.

Learning Disability Simulation Workshops

SPIN is proud to announce that starting in the Fall of 2010 we will be available to offer simulation workshops to parents, teachers, or anyone interested in better understanding the lives of individuals with learning disabilities. The simulation provides a lively, thought-provoking activity that lets participants experience some of the challenges and frustrations faced by people with LD. For more information or to request a simulation call Liz @ 722-2800 or e-mail echavez@spinsc.org

We Want You— A CALL FOR BOARD MEMBERS

Would you like to give back to the community? Would you like to help families of kids with special needs & help SPIN become a stronger organization? If you want to serve on a dynamic & dedicated Board of Directors, then SPIN would like to talk to you. **Please call Cece Pinheiro at 722-2800** for more details.

Welcome to new Board member Courtney Leibrock, stay tuned for more information about Courtney in our next newsletter.

Be a Water Dog!

Jim Booth Swim School

The Best in Baby Swimming
In Watsonville and in Santa Cruz
at Harvey West pool.

Call Jim 722-3500

www.JimBoothSwimSchool.com



thank you/ gracias

QUIZ NITE 2010



Quiz Nite 2010 was a big success, thanks to everyone who made the event the best ever. Special thanks to the Quiz Nite Committee Co-Chairs Amanda Owens, Cheri Bell and their crew!”

Quiz Nite 2010 fue un gran éxito, gracias a todos los que hicieron este acontecimiento el mejor de todos. ¡Gracias especialmente los presidentes del Comité de Quiz Nite Amanda Owens y Cheri Bell y su equipo!”

Quiz Nite 2010 at our new venue Holy Cross Parish Hall in Santa Cruz on March 13th was more fun than ever. Our Guests enjoyed a lovely dinner, quizzing competition, Mystery “surprises” and silent auction. The Haifley Family table received the award for “Highest Quiz Score” & was the honored SPIN family of 2010. We celebrated our 10 year anniversary as a non profit and had many distinguished guests including, CAFEC Executive Director Marybeth Phillips, Santa Cruz Mayor Mike Rotkin, SCCounty office of Education Superintendent Michael Watkins, and SC County Supervisor Mark Stone. Our founding board members received special Assembly recognitions and SPIN received a Resolution from the Senate and Assembly and proclamations from the City and the County of Santa Cruz. Thanks to Maureen McCarty from Senator Simitian office & Ali Spickler from Assembly Member Bill Monning office.



Special thanks go out to the following people who made Quiz Nite such a wonderful, successful night: Our Celebrity MC, Lex van den Berghe; our professional photographer Brian Frus, Community TV of Santa Cruz County videographer Peter McGettigan, Jim Vosen DJ, Sheryl & Bill Wobber & Dan Haifley, our Quiz Masters; JOHN GALLAGHER FOR JUDGE volunteer table sponsor, our Board of Directors; Peg Gallagher, Lisa French, Eileen Fuller, Cheri Bell, Melissa Scarpace & Ed Golditch; our volunteers, Amanda Owens, Lisa Renelle, Heidi Lister, Jean Peterson, Kalena Allard, Pat Golditch, Becka York, Cece Pinheiro. We thank all of the parents, and other friends who came to Quiz Nite and made it the best event of the year! We hope to see you again next year!

*A big thank you ▶
to the following
businesses
and individuals
who donated to
Quiz Nite!*

*¡Muchas gracias
a los siguientes
negocios e
individuos
quienes donaron a
Quiz Nite!*

Adam & Katrina Lippman
Alex Nizenkoff
Alfaro Winery
Alladin Nursery
Amanda & Tom Owens
Angela Jennings
Arbonne
Artisan's Gallery
Bambinibliss.com
Barbara Johnson
Barbara Stringary
Beauty Unlimited
Berdell & Mike Spellman
Betsy & Tim Walsh
Bike Dojo
Blue Moon Clothing
Blue Screen Computers
Boulder Creek Golf & County Club
Brenda & Russ Slegal
Brian K. Sholes & Anne L. Shannon
Café Cruz
Café Sparrow
Carolyn & Carl Heier
Coraly Hanson
Corralitos Market & Sausage
Company
Cross Fit Santa Cruz

Daniel & Olivia Haley
Debby & Jim Baker
Debbie Menges
De Laveaga Golf Course
De Laveaga Motors
Dennis D. Jacobsen
Diana & Greg Cornell
Donna M. Ramos
Eileen Sambraillo
Epic Wines
Gravago Gallery
Greg Patricio
Green Valley Cinema
Hansen Feed & Pet Supply
Hollins House Restaurant
Jacob Young
James Aschbacher
Jason M. Heath & Tara Rufo
Jay & Charlotte Meisel
Jennifer Brustar
Joseph Briton Designs
Joseph Leon
Judy Campbell
J. Win Jewelry
Kalena & Michael Allard
Kate Nolan Gallery
Kayak Connection

Kevin & Shari Rausch
Kimberly Mylls
Kristin Morrison Palma &
Richard Charles Palma JR.
Le Chef
Leon Canerot
Lin Harbetson
Lydia Snider
Mark & Lisa Whitcomb
Mark & Stephanie Casper
Marquez Jumhouse & Pinatas
Matt & Cheri Bell
Mitchell Jackman
Mr. Goodie's Antiques
New Native, Inc.
Pajaro Valley Golf Course
Pasatiempo Golf Club
Passilla's Tires
Pat & Ed Golditch
Peg & John Gallagher
Plantronics
Poetic Cellars
Pure Skin
Resort at Squaw Creek
Rhapsody Hair Salon
Richard C. Palma Ttee
Ridge Vineyards
Robin Hill Studio

thank you/ gracias

Donors/Donantes

Cecilia Pinheiro
Dawni Pappas
Deborah Wechsler & Jeffrey Mabert
Dena L. McKelvey
Eileen A. Fuller
Joyce Anderson
Judith Fried
Linda Jordan & Robert Terrell
Lisa Peterson
Margaret Rose & John Gallagher
Mary Kathryn Machado

Nancy & Ross Miller- in honor of
Mr. and Mrs. Dana H. Lee
Paul Bellina
Santa Cruz Derby Girls
Shadowbrook Restaurant
Thomas R. & Linda H. Rev Trust
Tina May
UCC- First Congregational Church
Santa Cruz

Outstanding Volunteer

SPIN would like to send out a BIG Thank You to Claire Owens for volunteering her time. Claire has been helping Sonia Plageman at the Santa Cruz office. We really appreciate that you have taken the time to learn more about our organization and for giving back to the community. Thank you for your dedication to helping children with special needs.



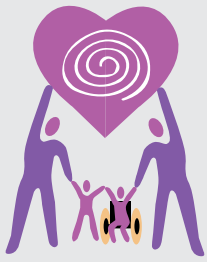
QUIZ NITE DONORS *Continued—*

Santa Cruz Seaside Co.- Santa Cruz
Beach Boardwalk
Scott Haggblade
Seascape Golf Club
Seascape Resort- Sanderling's
Restaurant
Soquel Vineyards
Spring Hills Golf Club
Stacy D'Amico
Straw Hat Pizza, Watsonville
Stephanie & Mark Casper
Stuart Sakuma, M.D.
Super Silver
The Allison Lee Condit Foundation
The Art Factory
The Beach Bean
Thomas K. Chan
Trudi Eldridge
Wendy Laird
Zinnia's



**Please remember to check out the SPIN website:
*¡Recuerde visitar el sitio Web de SPIN:***

www.spin.sc.org



Special Parents Information Network

Mailing address/Domicilio
P.O. Box 2367
Santa Cruz, Ca 95063
Email: info@spinsc.org

So. Santa Cruz Co Office
294 Green Valley Rd. Ste. 313
Watsonville, Ca 95076
Phone: (831)722-2800
Fax: (831)722-2580

No. Santa Cruz Co Office
740 Front Street, Suite 175
Santa Cruz, Ca 95060
Phone: (831) 423-7713

San Benito Co Office
P.O. Box 2367
Santa Cruz, Ca 95063
E-mail: msandoval@spinsc.org

MARK YOUR CALENDAR— Upcoming News

Workshops & Events—

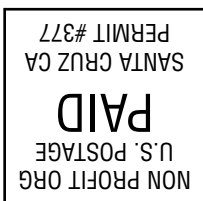
- 1. Human Race**
Saturday, May 8th 2010 at 9:00am
2300 Delaware Ave., Santa Cruz
Designate SPIN to receive contributions
Agency Number 213
www.humanracesc.org
- 2. Helping Your Child With Speech/Language Impairments at Home**
Tuesday, May 25th 2010
From 6:30-8:30pm
Pajaro Valley Community Health Trust,
85 Nielson St., Watsonville.
- 3. Awards Ceremony**
Saturday, August 28th 2010
From 3:30-6:30pm
YWCA, 340 East Beach Street,
Watsonville
- 4. Coming in the Fall 2010**
Planning for the Future: Wills, Trusts,
Guardianships and Conservatorships
Presented by: Mitchell Jackman
In Watsonville

Support Group Meetings—

- 1. SPIN All Disabilities Parent Support Group**
Will now meet at a new place and time
The 1st Sunday of the month
From 2:00-4:00pm
At Sutter Maternity and Surgery Center,
2900 Chanticleer Ave. Santa Cruz
Call Nancy at 423-7713 or
nwinans@spinsc.org to RSVP
or for more info.
- 2. Autism/ Asperger Support Group**
Meetings will be held the first Tuesday
of each month at 7:30pm at the Porter
Memorial Library in Soquel, 3050 Porter
Street. For more information or to be placed
on the email list, contact
cecilyruttenberg@gmail.com
- 3. Grupo de Apoyo de Síndrome Down**
Se reúne el primer sábado de cada mes
Empezando a las 10am
En el Parque Marinovich
118 2nd Street, Watsonville

SPIN is a member of "CAFEC" – The California Association of Family Empowerment Centers on Disability – www.cafec.org

Current Resident or



Special Parents Information Network (SPIN)
P.O. Box 2367
Santa Cruz, Ca 95063
Email: info@spinsc.org
Website: www.spinsc.org

